

Chimes

The Newsletter of Gary Church
and Winfield Community Church
November/December 2022



Staff

Rev. Dr. Chris Pierson

SENIOR PASTOR

cperson@garychurch.org

Rev. Brian Felker Jones

PART-TIME ASSOCIATE PASTOR

bjones@garychurch.org

Rev. Bruce Anderson

WINFIELD UNITED METHODIST CHURCH

pastorbrucea@gmail.com

Jennifer Whiting

DIRECTOR OF MUSIC AND CHOIR DIRECTOR

jwhiting@garychurch.org

Kevin Lange

ORGANIST

klange@garychurch.org

Carey Williams Bebar

DIRECTOR OF CHILDREN'S MINISTRIES AND

ADULT EDUCATION COORDINATOR

cbebar@garychurch.org

Daniel Lee

DIRECTOR OF YOUTH MINISTRIES

dlee@garychurch.org

Janet Mathis

COMMUNICATIONS DIRECTOR

jmathis@garychurch.org

Deb Evans

BUSINESS ADMINISTRATOR

devans@garychurch.org

Jennifer Castino

WELCOME MINISTRIES COORDINATOR AND

MEMBERSHIP SECRETARY

jcastino@garychurch.org

Deb Hafner

CHURCH OFFICE

office@garychurch.org

Pam Keller

PRINT COMMUNICATIONS COORDINATOR

pkeller@garychurch.org

Becky Lemna

ELECTRONIC COMMUNICATIONS COORDINATOR

blemna@garychurch.org

Mike & Donna Capra

CAPRA JANITORIAL

Grace Ryken

CHILDCARE COORDINATOR

childcare@garychurch.org

Kirsten McCluskey

PRESCHOOL DIRECTOR

preschool@garychurch.org

Mary Megan Bagnall

CHRISTIAN EDUCATION ASSISTANT

Sunday Worship

9 a.m. Sunday Worship

In person

Livestream and recording
later in the day at garychurch.org
Child care available

11 a.m. Sunday Worship

Service of Word & Sacrament

In person

Church Office Hours

Monday–Friday, 10 a.m.–3 p.m.
by appointment, 630–668–3100



Gary Church Podcast

(sermon, scripture)

garychurch.org

Updated weekly



Pastor Brian Podcast

(prayers, Christian

conversations)

garychurch.org

Updated monthly

Submissions for the January *Chimes* newsletter are due by noon on Tuesday, Nov. 1. Announcements for the Sunday bulletin and weekly e-news are due each Tuesday at noon. Send all submissions to office@garychurch.org.

Gary and Winfield Churches use photos and videos of adults taken at events, classes and worship for use in our printed and online publications and in social media unless an individual directs the church not to do so by completing a form available in the Church Office. We use photos or videos of minors only when their parents or guardians have given permission by signing the Gary Kids or Gary Youth registration forms, available on our website.

Love Divine

“Love Divine, all loves excelling,
joy of heaven to earth come down;
fix in us thy humble dwelling;
all thy faithful mercies crown!
Jesus, thou art all compassion,
pure, unbounded love thou art;
visit us with thy salvation;
enter every trembling heart.”
—Charles Wesley, 1747

Arguably my favorite hymn of all time, these words penned by Charles Wesley have stirred the hearts of many. Recently sung on the occasion of the funeral of Queen Elizabeth II,

**Wesley's
hymn helps
us to
remember
that we are
not alone.**

Wesley's words pointed people to focus their attention on God's love. People, regardless of denomination, have been drawn to the beauty of Wesley's words, which appear in over 1,000 different hymnals the world over. I could literally sing this hymn every Sunday. It never gets old for me. This Advent and Christmas season, our theme for worship will be “Love Divine,” inspired by Wesley's classic hymn. Wesley's words help us to center our thoughts on the incarnation of Christ as we anticipate and celebrate the coming of Christ, God's Word made flesh. This beautiful hymn invites Christ to enter our hearts, perhaps even turn our hearts of stone into hearts of flesh. And it speaks of God's heart, revealed in the person of Jesus Christ.

We often speak of God's love as “unconditional” even “unlimited” but Wesley describes love as “unbound.” I love the image of God's love on the loose, unable to be bound by people or institutions, a love that overcomes barriers. During the holy seasons we need to be reminded of God's love, mercy and compassion.

The season from Thanksgiving through the New Year (secular observances) can be challenging for so many. They are challenging not only because of the stresses that accompany the season, but also the surfacing and resurfacing of pain and loss, and broken relationships.

Wesley's hymn helps us to remember also that we are not alone. While the words reflect intimacy and feel very personal, it always speaks of “us.” We are meant for and made for community. In community we may find strength for many of life's challenging circumstances.

When Christ is at the center of our faith community we affirm again that we belong to one another and we belong to God.

As you read this issue of *Chimes*, please mark your calendar. During the months of November and December, there will be many of our long-held traditions, as well as new opportunities for us to live out our calling as Christians; “Bountiful Love” will be a new opportunity for us to gather around table in a pre-Thanksgiving Celebration. “Love Is Born” will be the focus of our Lessons and Carols, with choirs of all ages. “Christmas Sharing” will call upon us once again to share concrete expressions of God's love with our surrounding community, and our traditional Christmas Eve services.



Beloved, let us love one another, for love is of God; and everyone who loves is born of God and knows God. 1 John 4:7-8

Christopher L. Pearson

Love DIVINE

ADULT Christian Education and Discipleship

Three Women



Sundays, Dec. 4, 11 and 18, 10 a.m., Chapel
led by Dr. Beth Felker Jones

What does it mean to welcome Jesus into the world and into our lives? We'll seek answers to these questions as we join three women from the Bible — Mary, Elizabeth and Anna — as they anticipate and receive the coming of Jesus.



An Advent Study

Gift of Love

Sunday, Nov. 6, 10 a.m., Chapel

Gary Church's Finance Committee shares what stewardship means in the context of scripture and Gary Church.



Faith Club Conversations on Music

Tuesday, Nov. 8, 7 p.m., Commons E
led by Vickie Austin

We'll talk about the many ways Christians express themselves through music. Complete with singing, you'll experience the pull that music has in our Christian journey. From traditional hymns to praise music, we'll explore music specific to the Methodist church, including the history of some of our greatest lyricists and composers like Fanny Crosby who, though blind, wrote more than 8,000 hymns, many of which we still sing today.

The Faith Club brings women of Gary Church together with other women of Christian, Jewish and Islamic faiths to develop community and learn from and about one another. Contact **Kim Austin** through the Church Office for more information.

F A I T H C L U B

Connected in Christ: A Report from Gary's Annual Conference Delegates

Sunday, Nov. 13, 10 a.m., Chapel

This year at annual conference our theme was "Connected in Christ: Come to the Water."

We were reminded that what truly connects us to one another is our relationship in and through Christ.

Our lay members, who attended this year's session of the Northern Illinois Conference of The United Methodist Church, will share their experiences in Christian Conferencing including worship, Bible studies, presentations and their participation in legislative sections.



Worship & Music

Sundays, Nov. 20 and 27, 10 a.m., Chapel

Enjoy this unique class devoted to worship and music.

John Wesley urged us to "Sing all. Sing lustily and with good courage. Beware of singing as if you were half dead or half asleep. Do not bawl so as to be heard above the rest of the congregation but strive to unite your voices together."



Anti-Racist Book Club

The Tao of Raven: An Alaska Native Memoir

Wednesday, Nov. 30, 7 p.m., Commons

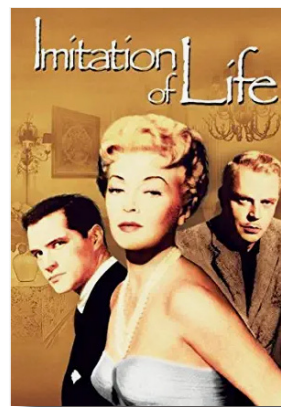
Ernestine Hayes expresses an ongoing frustration and anger at the obstacles and prejudices still facing Alaska Natives in their own land, but also recounts her own story of attending and completing college in her fifties and becoming a professor and a writer. Hayes lyrically weaves together strands of memoir, contemplation and fiction to articulate an Indigenous worldview in which all things are connected, in which inter-generational trauma creates many hardships but transformation is still possible. To join the conversation, purchase the book on your own and register at garychurch.org.



Imitation of Life (1959 film)

Wednesday, Dec. 28, 7 p.m., Commons

Living a lie is a poor substitute for living the truth — sometimes it takes the harsh realities of life to help us discover who we truly are. The legendary Lana Turner stars in this 1959 version of Fannie Hurst's emotionally charged drama, which chronicles two widows and their troubled daughters as they struggle to find true happiness amidst racial prejudice. To join in the conversation, view the movie on your own (there are several streaming options) and register at garychurch.org.



Crafting with Aldersgate United Methodist Church

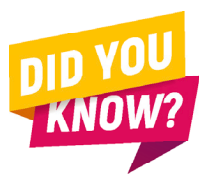
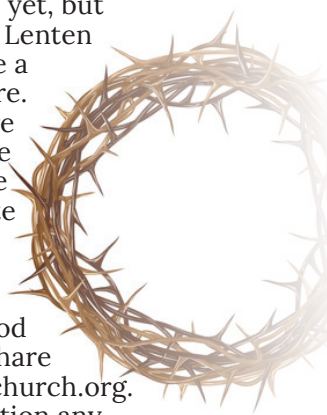
Saturdays, Nov. 12 and Dec. 10, 10 a.m.
1753 S. Blanchard St., Wheaton



Fellowship together as each participant creates a seasonal project to take home. RSVP to **Pastor Daniel** at aldersgate.wheaton@gmail.com.

Not too soon for Lenten devotions

We realize Advent hasn't happened yet, but we also know that inspiration for a Lenten devotion can happen anytime. Take a photo. Write a poem. Draw a picture. Maybe a recent sermon or scripture passage has touched you. Or maybe our theme for the year, "Love Is the Direction" has moved you. We invite all children, youth and adults of Gary, Winfield and Aldersgate Churches to share reflections, personal stories and glimpses of God at work. If you know you'd like to share something, please register at garychurch.org. You're welcome to email your devotion any time before *Friday, Feb. 3* to **Janet Mathis**, jmathis@garychurch.org.



Gary Church's Facebook page now has 700 followers and Instagram has more than 100. We post photos, news, Bible verses, reminders, silly stuff and more. It's a great way to connect with church friends beyond Sunday mornings. Follow our social media and comment on posts, and you could be the first to learn something new about Gary Church.



**Hey Parents! We know your holiday calendars are filling up.
Check out our Gary Kids events and be sure to add a few!**

what we're teaching

November Series: Plate It

Kids love to be in the kitchen. They may even love helping prepare something delicious! Having a plan or a recipe usually helps, too. Just like having a plan in the kitchen helps the meal we hope to enjoy, the stories of the Old Testament prophets are like a cookbook that helped people prepare for the Savior that God would send one day. Even though there's no exact recipe, kids will find that they can prepare themselves for a loving relationship with God when they 1) trust God, 2) talk to God, 3) listen to God and 4) leave the results to God.



December Series: Joy to the World

What are your go-to Christmas traditions? It's amazing how different all of our Christmas celebrations can be, especially when you take into account how Christmas is celebrated all over the world. This month, we'll be reminded what a universal gift Jesus is, and how Jesus brought good news, joy and peace on that very first Christmas so that the whole world could know God!



Sunday School Special Event: Christmas City

Sunday, Dec. 4, 10 a.m.

Christmas is celebrated in many different ways around the world, but there is one theme that remains the same no matter your location; it's a time of joy spent with the ones you love! At Christmas City, your families will "travel the globe" to experience unique holiday traditions. With passports in hand, they will visit each station to engage their senses in a global celebration of food, song, crafts, games and more!



what's happening

Parent's Night Out

Fridays, Nov. 11 and Dec. 2, 6:30-8:30 p.m.

Drop off your kiddos at Gary Church and enjoy some well-deserved time away. Each month features a movie, craft, and free-play for kids ages 2-11. Limit 20. Suggested cash donation of \$5 per child. Register at garychurch.org.

Toddler's Morning Out

Saturday, Nov. 12, 11 a.m., Chick-fil-A

Toddler families are invited to Chick-fil-A on E. Loop Rd. in Wheaton to connect over playtime and lunch. RSVP to **Graceanne Ryken** at childcare@garychurch.org.



4th & 5th Grade Fellowship Turkey Bowl!

Friday, Nov. 18, 6:30–8:30 p.m.

Come out for the Gary Youth classic, Turkey Bowl!
RSVP to **Pastor Carey** at cbebar@garychurch.org.

Christmas Party!

Friday, Dec. 16, 6:30–8:30 p.m.

Decorate a gingerbread house, play reindeer games, and celebrate the season! RSVP to

Pastor Carey at cbebar@garychurch.org.



Helping Hands | Pajama Party

Sunday, Nov. 27 at 9 a.m. Kids' Church

All children ages preschool 3s through fifth grade are invited to a Helping Hands Pajama Party. Kids will learn, play and use their “helping hands” to support Christmas Sharing.



Feed My Starving Children Family Service Project

Tuesday, Nov. 22, 4:30–6:15 p.m.

This Thanksgiving week, Gary Kids families are invited to give back with gratitude by packing meals for starving children around the globe. Sign up at fmssc.org with the join code: KLNVMG or search Gary United Methodist Church.



Drury Lane Theater Presents: A Christmas Carol

Saturday, Dec. 3, 12 p.m.

Hear the timeless retelling of Charles Dickens's classic, *A Christmas Carol*, presented by Drury Lane Theatre, Oakbrook. Cost is \$15 per person. Register at garychurch.org.





Gary Youth

Gary Youth: Fall Retreat

This year's fall retreat was extra special! Over 80 youth and adults from seven United Methodist churches joined together at Lake Geneva Youth Camp. The retreat theme was J.O.Y. (Jesus, Others, and You) with a focus of joy in fellowship as reflected in scriptures in Philippians 1–2 and Psalm 133. Rev. Josiah Montgomery, Pastor of East Side UMC in Chicago and Assistant Director of Faith and Action at North Central College (Naperville) was the retreat guest speaker.

The planning team consisted of eight churches (Belvidere: First UMC, Bolingbrook: Friendship UMC, Buffalo Grove: Kingswood UMC, Chicago: Urban Village Church, Hinsdale UMC, Machesney Park: New Life UMC, Mendota: Zion UMC, and Wheaton: Gary UMC). Co-sponsors were the Anti-racism Task Force, the Discipleship Task Force, Garrett-Evangelical Theological Seminary, and the Northern Illinois Conference. We are so grateful that we are one church and can share joys and struggles together. Hopefully, this is the beginning of something the conference can work together on for years to come.



What are we learning in November?



Being a good friend is easy! As long as you make time to hang out, remember their birthday, and answer their texts, you're eligible for the Great Friend Award ... right? Friendship might feel easy when life is easy, but it gets more complicated when your friends are hurting or struggling. What should you do? What should you say? What should you not say? When our friends need help, there are no easy answers, but in November, we'll follow the lead of a few people who've been there. Through the stories of Job, Ruth, Naomi, Elijah, Eli and Hannah, we'll see how God invites us to "be with" people when they're grieving, lonely, in need, or feeling hopeless, and how God is already with them.

What are we learning in December?



Christmas is almost here! Which means there's a lot for us to look forward to — sometimes impatiently. But you know the saying, "good things come to those who wait"? It's true for Christmases now, but it was true on the very first Christmas as well. You see, the day Jesus came to earth wasn't a sudden surprise. It was the first step in a long-awaited plan. In December, we'll hear the Christmas story from the perspective of the prophets in the Old Testament, who foretold and then waited for the good things God had in store.

Weekly Gatherings

Middle School:

Wednesdays 7–8:30 p.m.

Nov. 16, no meeting

Sun., Nov. 20
Turkey Bowl

Nov. 23, no meeting
(Happy Thanksgiving!)

Nov. 30, 7–8:45 p.m.
Feed My Starving Children

Dec. 14
Christmas Party

Dec. 21, no meeting
(Longest Night Worship Service)

Dec. 28, no meeting
(Christmas Break)

Jan. 4, no meeting
(Happy New Year!)

High School

Sundays, 7–8:30 p.m.

Nov. 20, Turkey Bowl

Nov. 27, no meeting

Wed., Nov. 30
Feed My Starving Children

Dec. 4, no meeting
(We encourage all families to volunteer for Christmas Sharing)

Dec. 18
Christmas Party

Dec. 25, no meeting
(Merry Christmas!)

Jan. 1, no meeting
(Happy New Year!)

Events

Turkey Bowl

Sunday, Nov. 20, 7–8:30 p.m.

All Gary Youth, middle school and high school, are invited to a night of bowling in the Activity Center...with turkeys! First, find your turkey, wrap it up and strike! Winners will take home a coveted Golden Turkey trophy.



Feed My Starving Children

Wednesday, Nov. 30, 7–8:45 p.m., Schaumburg

Families of Gary Youth, middle and high school, are invited to pack food for children in need all over the world at Feed My Starving Children. We will meet on location at 740 Wiley Farm Court, Schaumburg. There is a limited amount of seats. Visit the Gary Youth page at garychurch.org to sign up.

Christmas Party

Middle School: Wednesday, Dec. 14, 7–8:30 p.m.

High School: Sunday, Dec. 18, 7–8:30 p.m.

We will have an ugly sweater contest, gift exchange, games and prizes! Bring a wrapped unisex gift worth at least \$15. We will celebrate in the youth room.



Sunday School

10–11 a.m.

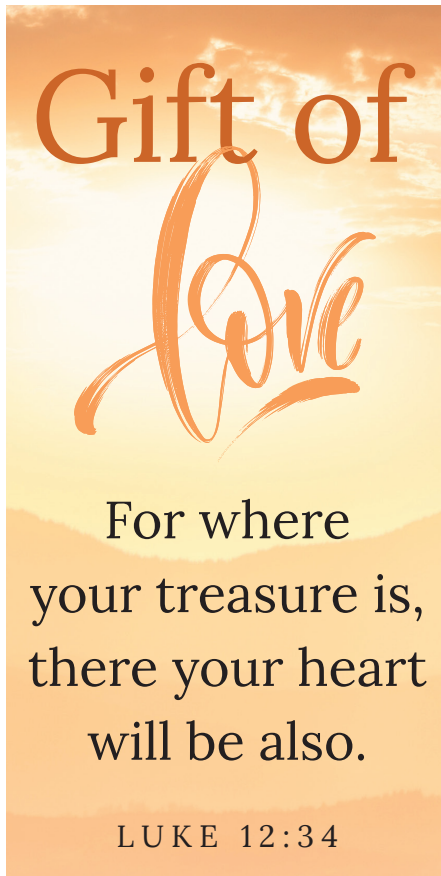
Middle School: Commons E

High School: Heritage Room

Stay Connected

You can stay connected with the latest Gary Youth news in four ways.

- 1.) Visit garychurch.org and navigate to our youth page.
- 2.) Receive weekly Gary Youth emails.
- 3.) Visit us on Instagram ([gary_youth](https://www.instagram.com/gary_youth)) or
- 4.) Facebook (Gary Youth).



Gift of Love: 2023 stewardship campaign

The Gift of Love stewardship campaign started with the first of several presentations from members of the congregation sharing their love through prayers, presence, gifts, service and witness. The campaign will culminate on Nov. 12, when we will celebrate the spiritual gifts and resources that God has provided and how each of us might be inspired to use them in the life of Gary Church.

Go to the registrations page of garychurch.org, and click on the following links:

“Get Connected” will show you the many ways you can share your spiritual gifts.

“Stewardship Campaign: Gift of Love” will show you how you can pledge your resources.

Trustees CORNER

After workers complete the stabilization and restoration of the outside of the east elevation of the building, they will then restore the stone on the inside of the building above and beneath the balcony. There will be scaffolding inside the building. Please keep a safe distance from the equipment and materials. This work is scheduled to start in November. We also had the front porch of the Wesley Center power washed and painted.

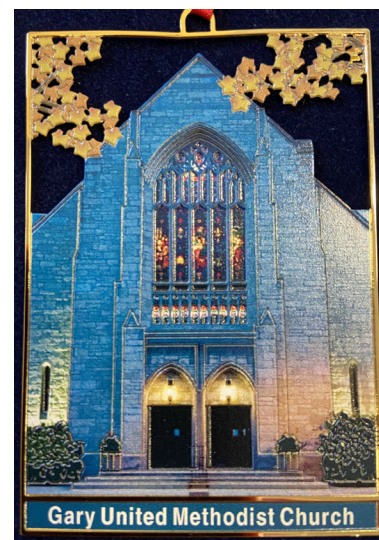
Please feel free to reach out to me or any member of the Trustees if you have questions.

David Plate
Board of Trustees Chair

Receive ornament with donation

This beautiful Christmas ornament can be yours, with a donation to the stained-glass restoration fund. The ornament shows the Great East Window, which needs costly repairs and restoration. The window has depictions of the Sermon on the Mount, Christ healing the sick, the Bible, the cross and crown of thorns. It contains symbols of inspiration (torch), healing (mortar and pestle), peace (olive branch) and advent (the rising sun).

You can make a monetary donation to the stained-glass restoration fund through the Church Office or online at garychurch.org/give. Ornaments will be distributed before Christmas.





Gifting stocks

Donating appreciated assets, like stocks, is one of the most impactful and tax-advantaged ways to express your generosity. By donating appreciated securities, you can bypass capital gains tax and you may itemize your gift as a deduction, but please consult your personal advisor regarding your specific situation.

If you are interested in making a stock gift to Gary Church, please contact **Deb Evans** in the Church Office. The transfer process may take seven to 10 business days. If you are considering making a year-end gift in this way, please plan accordingly.

Year-end gifts

If you are interested in making a year-end contribution, please make note of the following:

- If you would like to mail your gift, envelopes must be postmarked by Dec. 31.
- If you would like to drop off your gift, the Church Office hours are 10 a.m. – 3 p.m. Monday through Friday. The office will not be open on Saturday, Dec. 31.

Thank you for your generosity.

Giving less than expenses

Thank you for the support you continue to provide to Gary Church and our church family's mission. The following is a summary of the budget and actual results through Sept. 30, 2022.

<u>January – September 2022</u>	<u>Budget</u>	<u>Actual</u>
Giving	652,685	598,833
Expenses	734,510	687,399
Giving Over/(Under) Expenses	(81,825)	(88,566)

Giving is less than expenses by more than what we budgeted, so we are running at a slightly larger deficit than what we expected at this time of year (the monthly budget considers that giving is typically heavier towards the last quarter of the year). We do expect actual expenses to approximate budget, especially considering the level of inflation and increase in energy costs. We appreciate your continued giving and support for the remainder of 2022, including consideration of additional giving to help decrease the deficit and meet all our obligations.

Suzanne Marra
Finance Chair

Attend Church Conference

Monday, Nov. 14, 7 p.m., Commons

All Gary Church members are invited.





Beautiful Praise

From an early age I would sing as I played out under the silver maple in the backyard. When Dad drove into Jasper, I would ride in the back of the pickup and sing songs all the way there and back. (My favorite was "This Old Man, He Played One.")

One day I noticed he was about to go to the pecan orchard. So, I jump into the back, sitting on the tailgate, as he scooted down the bumpy dirt road. Dad hit a rut and the tailgate catapulted me straight up. As I fell back down, the hook at the end of the tailgate chain had come loose and caught a belt loop in my pants. I was dragged the rest of the way to the orchard.

I yelled at the top of my lungs for Dad to stop. When he finally did, he came around and saw me hanging by my belt loop, battered but not badly hurt. I was crying and mad at him and asked him why he continued on driving when I kept screaming for him to stop. He said, "I'm sorry, son. I thought you were singing."

There can be no reason for not singing. God is not interested in the quality of the voice; all praise is beautiful to the Lord for he listens to the heart. I believe God knows us through the songs we sing.

We tell the story of God to each other and for each other through our hymns, choral anthems, handbell music, and instrumental music. Join us. We need you. And, maybe, you need us, as well.

Philip Roberts

Men's Chorus and Altar Bells Director

For a list of all of our musical groups and when they meet, go to the Music Ministries page of garychurch.org.

Enjoy "**Lessons and Carols: Love Is Born**" on Sunday, Dec. 11 at 9 & 11 a.m. Advent lessons, music and art shape this unique worship experience.

Love Is Born

Lessons & Carols | Sunday, December 11



Advent Soup Supper



Wednesdays, Nov. 30, Dec. 7, Dec. 14, 5–7 p.m., Commons

Wednesday, Dec. 21, 5–6:45 p.m., Commons
(Worship at 7 p.m. Longest Night Service)

During the season of Advent, we will gather together for Soup Supper. This promises to be a wonderful opportunity for fellowship, food and faith as we prepare to celebrate the birth of Christ – together.

Also, we are seeking some masterful soup makers who might be willing to share their culinary talents for these gatherings. If you have a favorite recipe you'd like to share – or a new one you would like to test out – we'd love to try a taste.

Sign up for Soup Supper and/or to provide soup at garychurch.org.



Sunday, Nov. 13, noon, Commons

Let's gather together in the Commons for a Gary Church family Thanksgiving potluck. Main dish, coffee and lemonade will be provided. Please bring your favorite Thanksgiving side dish or dessert to share, plus place settings (plates, utensils) for your party.

Want to swap recipes? Please bring your recipe on an index card the day of the potluck.

Help prepare for our Thanksgiving feast. Volunteers are needed to set up and clean up.

Go to garychurch.org to let us know you're coming, share a recipe and volunteer. Suggested donation of \$5.00 with a maximum of \$20/family. Questions? Please contact the Bountiful Love Committee through the Church Office.

November Birthdays*

Happy (90+) birthday to:

Verne Bintz

December Birthdays*

Happy (90+) birthday to:

Jeri Nixon

December Anniversaries*

Happy (50+) anniversary to:

Esther & Howard Nicholas
Phil & Sandy Cline

Baptisms

Jake Kirchens, son of Douglas and Stephanie Kirchens, on Sept. 25

Margaret (Maggie) LaVanway, daughter of Larry and Nichole LaVanway, on Oct. 9

Congratulations!

Bruce, Pam and Hanna Keller on the birth of their grandson and nephew, Milo Keller Huppert, on Sept. 25

Kyle, Andrea and James Oren on the birth of their son and brother Cooper Oren, on Oct. 10

Pastor Chris and Sandy Pierson on the birth of their great-nephew, Chase Daniel Davis, on Oct. 16

Our sympathy

Ellie Pentland on the death of her sister, Patty Bailey, on Oct. 12

*If we've missed your special day, please contact the Church Office. We'd love to include the date in our records.

Donations needed for Christmas Sharing

It is time to prepare for Christmas Sharing! Gary United Methodist Church will once again generously contribute to the school/church community event to assist local families. This event started over 50 years ago at Gary Church, thanks to the late Bill Davisson. As a guidance counselor in District 200, Bill saw the needs of some of his students. Currently, eight churches come together to serve about 1,000 families during the holiday season.

We will be continuing this year with our “modified” version of Christmas Sharing. We will not be able to host our families inside Gary Church this year. We will continue our “drive-thru” model as we have the last two pandemic years. We will once again have Northern Illinois Food Bank help us distribute fresh food at St. John Lutheran Church — the Gary Church Parking Lot is not large enough for the food trucks. Each family will also receive a gift card. In addition to the food and gift cards, we will assemble toiletry boxes and have diapers available. Our site will include workers from Trinity Episcopal, St. John Lutheran and Gary Church. Guests identified by the schools and invited by these three churches will attend on **Saturday, Dec. 10.**

Once again this year, the program needs monetary donations. Gary members have been very successful the last two years in reaching our goal, and now it is time to do it again! Donations can be given through the Church Office or online at garychurch.org/give. Christmas Sharing also has a Facebook page with a “donate” button for the public to participate in our efforts. Tell your friends and family!

OUR RECOMMENDED DEADLINE FOR GIVING IS SUNDAY, NOV. 20, 2022.

Saturday, Dec. 10 is the special day! Coming together to help our community certainly inspires the Christmas spirit of giving. Sign up for the toiletry box assembly project and the food distribution day will be through Sign Up Genius. Information will continue to develop, so watch for news in Gary Church publications. Christmas Sharing is a great way to spread joy this holiday season!

Most sincere thanks,
Joe Davisson and Shelley Kenyon



GARY CHURCH *makes a difference*

Serve holiday joy to a senior

Every year, Gary Church partners with Outreach Community Center and First Presbyterian Church of Wheaton to host

Outreach

Community Ministries

a Christmas luncheon at First Presbyterian for the older adults supported by Outreach. For many of these seniors, this annual event is the highlight of their holiday season, and for many, their only celebration.

Gary Church has graciously helped each year by providing volunteers who contribute in many ways: helping with set up or clean up, making food, serving seniors at their tables, as well as making financial donations to make the day possible (A \$12 donation will provide a place at the table and a gift). Please make checks to Gary Church and note Outreach Luncheon in the memo area or go to garychurch.org/give. Be on the lookout for the holiday display in the Commons, where you will find a sign-up sheet to volunteer for set up, serving or cooking food.

This year's luncheon will be *Friday, Dec. 16* for approximately 125 older adults. Our guests will enjoy a traditional ham dinner with all the trimmings, enjoy a holiday musical presentation by students from Franklin Middle School and receive an individual gift of kitchen gadgets.

Thank you for joining us to add Christmas joy to a senior's holiday!

If you have any questions, please contact **Barbara Holmes** through the Church Office.

The power of the tab

Never underestimate the power of the little pop top tab. It serves as the easy open process for your favorite soda or can of soup. Then, when collected and saved, it is given to the Ronald McDonald House, combined with hundreds of other tabs and then sold to United Scrap Metal in Chicago at market rate. The proceeds go back into the general fund of the Ronald McDonald House. Would you believe this adds up to approximately \$40,000 per year?

We just delivered another 4 1/4 gallons of tabs to the Ronald McDonald House in Winfield. Our next delivery will put us over three million tabs collected. Hooray for our team! The House is almost back to pre-COVID operations. There are two volunteers each session, morning, afternoon and evening. The children are immunocompromised, so masks are to be worn at all times. The House is nearly full of families living near their hospitalized child.

The saving of tabs is such an easy thing to do, and it is worth its weight in gold. Please keep saving those tabs!

Mary Landreth

APPLAUSE, APPLAUSE From the PRC

Thank you to all the generous donors who gave items to the People's Resource Center during September. We took two truckloads of diapers, food and personal hygiene items over there to grateful volunteers. The cost of groceries has gone way up and the cost of necessary diapers is prohibitive. Whatever we can donate is a plus for our needy clients.



Hints on how to help:

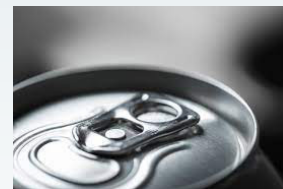
1. Whenever there is a "buy one, get one free" item in the store, do it and share the free one with the PRC.
2. Mention the needs of the PRC to friends and family whenever possible.
3. Picture yourself walking in the door at the PRC, needing assistance. It could happen.
4. Become a volunteer and get a shot of happiness by helping.

Thank you again for your generosity. Keep donating!

Mary Landreth

RTO needs monetary donations

As you plan your year-end giving, please consider making a financial contribution to the Radical Time Out (RTO) dinners. Gary Church is scheduled to provide the dinners for *January and February of 2023*, and we could use help paying for groceries. RTO provides fellowship, Bible study and prayer for former inmates and families. Donate through the Church Office or garychurch.org/give.





Advent Study

Sundays, Dec. 4–Dec. 18, 10 a.m., Chapel, see page 4 for details.

Soup Supper

Wednesday evenings during Advent, see page 13 for details.

Christmas Sharing

Saturday, Dec. 10, see page 14 for details.

Lessons and Carols: Love Is Born

Sunday, Dec. 11, 9 a.m. and 11 a.m.

Advent lessons, music and art shape this unique family worship experience.

Longest Night Service

Wednesday, Dec. 21, 7 p.m.

Traditionally held on the winter solstice, the longest night of the year, the service will provide a time to remember loved ones, share our hurting places with God or simply step aside from the stresses of the season.

Christmas Eve Services

Saturday, Dec. 24, in person and at garychurch.org

4 p.m. Family Worship Service

7 p.m. Traditional Worship Service

9 p.m. Traditional Worship Service with communion

Christmas Day Service

Sunday, Dec. 25, 11 a.m. in person

You're welcome to wear your pajamas for this intimate and informal worship service complete with communion. Families will worship together.

Epiphany of the Lord

Sunday, Jan. 1, 11 a.m. in person and livestreamed

Start the new year with a focus on faith. Families will worship together.



It is not too early to start your Christmas shopping!

And what easier way than to let Gary Preschool Gift Cards do the shopping for you. Gary Preschool's Gift Cards is a Gary United Methodist Preschool program that enables you to purchase gift cards for use at local retailers and have them delivered to you. We buy the cards at a discount, you buy the certificates for full face value and redeem them for full face value, and the preschool keeps the difference. The profit may not seem like a lot, but every dollar adds up!

If you would like to purchase Gary Preschool's Gift Cards, please complete the other side and return the form and your check (made payable to Gary Preschool) to the church office or the preschool by 11 a.m. on December 9. You may shop online at www.raiseright.com (Enter code: E278BD5913386 for Gary Preschool), drop your check at the church, and have your cards delivered. Your gift cards should be in by December 14-16.

Do you need some gift ideas?

For Her: Macy's, Kay Jeweler, Williams Sonoma, Sephora, Zappos.com **For Him:** Bass Pro Shops, Cabela's, Home Depot, Best Buy, Dick's, BP, AutoZone, Ace **For Teens:** iTunes, Amazon, GameStop, J Crew, Bath & Body Works, Nike **For Kids:** The Children's Place, Disney, American Girl, Build a Bear **For Teachers:** Barnes & Noble, Container Store, Target, Starbucks **For Everyone:** Visa, Starbucks, TJ Maxx, AMC, Ticketmaster, Overstock.com, Wal-Mart **For Crafts/Cooking:** Michaels, JoAnn Fabrics, Jewel, Shutterfly.com **Business Gifts:** Omaha Steaks, Fannie Mae Candy, Harry & David, Honey Baked Ham **For a night out:** Buffalo Wild Wings, Outback, Chili's, AMC Theatres, Lettuce Entertain You

These are just a few of the hundreds of retailers offered by Gary Preschool's Gift Cards! See reverse side for more retailers or visit www.raiseright.com for a complete list of available retailers! And remember gift cards are not just for gift giving! If you know where you will do some of your holiday shopping, you can buy a gift card to use like a debit card as part of your payment.

The fine print:

All sales are final. Gift certificates and debit cards cannot be returned for any reason, with the exception of a malfunctioning card.

Payment must be made at the time a participant places an order. Checks and money orders are the only forms of payment and should be made to Gary Preschool.

Please do not send cash. Gary's Gift Cards payments are not tax deductible because you receive dollar for dollar value. Gary's Gift Cards does not accept credit cards.

All Gary's Gift Card orders are double-checked. However, it is also the participants' responsibility to verify their order at the time of receipt. Any discrepancies should be addressed immediately. Gary's Gift Cards is not responsible for lost or stolen orders. If Gary's Gift Cards is unable to fill an order due to back orders from our vendor, we will make every attempt to get your certificates or cards to you as soon as possible. In the event your order will not be ready for scheduled pickup, we will contact you.



gary preschool news

Registration for Gary Preschool opening soon

It is hard to believe, but registration for the 2023-2024 school year is opening soon. Registration opens to our current families in November, church families new to the preschool in December, and new families in January. We offer programs for children as young as 18 months to 6 years old. For more information or to schedule a tour, please contact Preschool Director **Kirsten McCluskey** at preschool@garychurch.org or through the Church Office.

Our large outdoor sandbox is one of the universal favorites at Gary Preschool. It is one area that seems all about fun, but there is a lot of learning happening in that sandbox! Children work cooperatively to dig deep holes, build fine motor skills as they make and decorate sand cakes, explore volume and measurements as they scoop and dump buckets, and more.





Gary Preschool's Gift Cards Retailers/Order Form

Grocery Stores & Pharmacies

Jewel/Oscor (4%) \$25 _____
 \$100 _____ CVS (6%)
 \$25 _____ \$100 _____ Mariano's
 (4%) \$100 _____
 Walgreens (5%) \$25 _____

Restaurants

Applebee's (8%) \$25 _____
 Arby's (8%) \$10 _____
 Buca di Beppo (8%) \$25 _____
 Buffalo Wild Wings (8%) \$25 _____
 _____ Burger King (4%) \$10 _____

 California Pizza Kitchen (8%)
 \$25 _____ Cheesecake Factory
 (5%) \$25 _____ Chili's (11%)
 \$25 _____
 Chipotle (10%) \$10 _____
 Chuck E. Cheese (8%) \$10 _____
 Cold Stone Creamery (11%) \$10 _____
 _____ Dairy Queen (3%) \$10 _____

Dave & Busters (13%) \$25 _____
 Denny's (7%) \$10 _____
 Domino's Pizza (8%) \$10 _____
 Dunkin Donuts (3%) \$10 _____
 Einstein Bagels (10%) \$10 _____
 Jamba Juice (6%) \$10 _____
 Lettuce Entertain You (12%) \$25 _____
 _____ Lou Malnati's (8%) \$10 _____

Noodles & Co. (8%) \$10 _____
 Olive Garden (8%) \$25 _____
 Outback Steakhouse (10%) \$25 _____
 _____ Panera Bread (8%) \$10 _____
 \$25 _____ Papa John's Pizza
 (8%) \$10 _____
 Pizza Hut (8%) \$10 _____
 Qdoba (7%) \$25 _____
 Rainforest Café (9%)
 \$25 _____ \$100 _____ Red Robin
 (8%) \$25 _____
 Smashburger (10%) \$10 _____
 Starbucks (4.5%) \$10 _____
 _____ \$25 _____
 Steak n Shake (8%) \$10 _____
 Subway (4.5%) \$10 _____

Entertainment

AMC/Loews/Cineplex (8%) \$25 _____
 _____ Century Theatres (4%) \$25 _____

 Regal Cinemas (8%) \$25 _____

Gas & Auto

Auto Zone (7%) \$25 _____
 BP (1.5%) \$50 _____ \$100 _____
 Jiffy Lube (8%) \$30 _____
 Mobil/Exxon (1.5%) \$50 _____
 Shell (1.5%) \$25 _____ \$50 _____

Retail Stores

Ace Hardware (4%) \$25 _____ \$100 _____
 American Eagle (10%) \$25 _____
 American Girl (9%) \$25 _____ \$100 _____
 Bass Pro Shops (10%) \$25 _____ \$100 _____
 Barnes & Noble (8%) \$10 _____ \$25 _____
 Bed, Bath & Beyond (7%) \$25 _____
 Best Buy (4%) \$25 _____ \$100 _____

Bloomingdale's (12%) \$25 _____
 Build-A-Bear Workshop (8%) \$25 _____
 Cabela's (10%) \$25 _____ \$100 _____
 Claire's (9%) \$10 _____
 Container Store (9%) \$25 _____ \$100 _____
 Crate & Barrel (8%) \$25 _____ \$100 _____
 Dick's Sporting Goods (8%) \$25 _____
 Disney (3%) \$25 _____ \$100 _____
 Express (10%) \$25 _____
 Foot Locker Stores (8%) \$25 _____
 Gap (14%) \$25 _____
 Home Depot (4%) \$25 _____
 J Crew (13%) \$25 _____
 JoAnn Fabrics (6%) \$25 _____
 Kohl's (4%) \$25 _____
 L.L. Bean (16%) \$25 _____
 Lands' End (15%) \$25 _____
 Lowe's (4%) \$25 _____
 Macy's (10%) \$25 _____
 Menards (3%) \$25 _____
 Neiman Marcus (12%) \$50 _____
 Nike (12%) \$25 _____
 Nordstrom (4%) \$25 _____
 Office Depot/Max (5%) \$25 _____
 Pottery Barn (8%) \$25 _____
 REI (8%) \$25 _____
 Sephora (5%) \$25 _____
 Staples (5%) \$25 _____
 Talbots (13%) \$25 _____
 Target (2.5%) \$25 _____ \$50 _____
 TJ Maxx, HomeGoods, Marshalls (7%)
 \$25 _____ Williams Sonoma (8%) \$25 _____

Online & Other Services

Amazon.com (1.7%) \$25 _____ \$100 _____
 iTunes (5%) \$15 _____ \$25 _____
 Overstock.com (8%) \$25 _____
 Wayfair (6%) \$100 _____

Travel

Fairmont Hotels (9%) \$100 _____
 Hilton (2%) \$100 _____
 Hotels.com (6%) \$100 _____
 Southwest Airlines (4%) \$250 _____

Total cards ordered:

Total amount due:

Name: _____

Address: _____

City, State, Zip: _____

Phone: _____

Pick up (please circle one):

Mail (add \$10)

Preschool

Church Office

Please write checks payable to
 Gary Preschool

Orders are due by *Dec. 9, 11 a.m.*



WinChimes

Winfield Community United Methodist Church

An Affiliate of Gary United Methodist Church

Know that the Lord is God. It is he who made us, and we are his; we are his people and the sheep of his pasture. Enter his gates with thanksgiving and his courts with praise. Give thanks to him; bless his name. For the Lord is good; his steadfast love endures forever and his faithfulness to all generations.

Psalm 100:3-5

Rejoice always, pray without ceasing, give thanks in all circumstances, for this is the will of God in Christ Jesus for you.

1 Thessalonians 5:16-18

We can give thanks that God offers us hope for the future

This year seems to be flying by. It is hard to believe that November is here, and we are quickly moving into the holiday season. November brings us to Thanksgiving. During more agricultural times, it would have been when most of the harvest was in and the animals would be their fattest, and a chance to gather to celebrate the bounty of another year's hard work. Today, it is still a time to gather with family and friends to give thanks for what God has provided for us during the year. This holiday is typically the kickoff for the Christmas holiday (though I have been seeing Christmas ads and displays since September). Both holidays are a chance to take a moment to thank God for providing for us for another year.

Celebrating the plenty of the harvest gives way to God's bounteous love for us in the gift of Jesus that we celebrate at Christmas, when God's Messiah was born. In the life, death and resurrection of Jesus, God overcame our slavery to sin and death. God came to earth to experience what it is like to be human, to be tempted, and to overcome that temptation with faith and love.

Even though we may look back at the year and see many trials and much suffering, we can still give thanks for the gift of God's goodness

that helps us to overcome these things; and give thanks to God for walking with us through them. We can give thanks that God offers us hope for the future, where there might otherwise be none. We can give thanks that we do not have to go through life's trials alone. And we can give thanks that God has also experienced these trials of life and so knows what we are going through. We can give thanks that there is no suffering and disappointment that God cannot redeem, and that gives us hope

for the future. It allows us to look forward to a future with hope in waiting to see how God can turn something bad into something that works toward the good of the Kingdom.



So let us give thanks to God in all circumstances, knowing that in the gift of Christ Jesus sin and death have been overcome, and God is able to make a new way where we might not

be able to see one. Happy Thanksgiving and Merry Christmas to one and all, for Christ is risen and the world will never be the same. That is reason to rejoice.

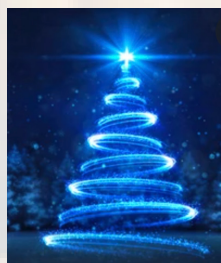
Winfield Church

Christmas Eve Service

Saturday, Dec. 24, 6 p.m., in person
Traditional Family Worship Service

Christmas Day Service

Sunday, Dec. 25, 10:30 a.m., in person
Traditional Worship Service



OS 347 Jefferson, Winfield, IL 60190



224 North Main Street
Wheaton, IL 60187
630-668-3100 phone
www.garychurch.org

**Winfield Community
United Methodist Church**
Affiliate of Gary Church
www.winfieldumc.org

Nonprofit Org.

U.S. POSTAGE

PAID

CAROL STREAM, IL

60188

PERMIT NO. 6014

CHANGE SERVICE REQUESTED
PUBLISHED MONTHLY



